

Every Shaklee product is designed to make you healthy – and do it so well you’ll tell your friends about it!

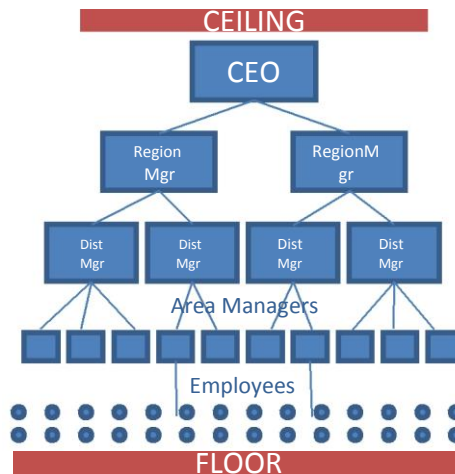
You’re rewarded for sharing the **purest, most scientifically-advanced, earth-friendly** products that are **clinically proven to be effective.**



You’re rewarded even more by helping others do the same!

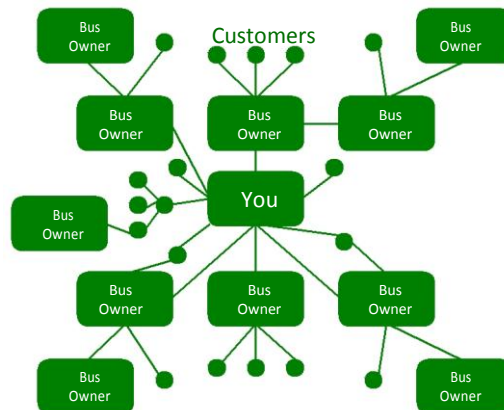
Traditional Corporation

- Examples like Coca-Cola & Apple are not a “one-man show.”
- Large, successful corporations rely on leveraging the efforts of an entire network of people.
- Those at the top are compensated based upon the performance of those below them.
- Floor: those at the bottom have little opportunity for growth.
- Ceiling: those at the bottom or in the middle cannot reach the top unless a position opens.
- Neither your position nor your income can be left to your children.



A Shaklee Business

- Success is built on leveraging effort. You are rewarded not only for telling others about the products you love, but also on your efforts of mentoring others & helping them to build *their* businesses.
- **NO Floor:** everyone has equal opportunity for growing their own business.
- **NO Ceiling:** there is no limit to how large or how successful your Shaklee organization can become!
- Your organization and it’s residual income can be left to your children.



What’s Your Goal?

\$1,000/mo . . . \$5,000/mo . . . \$100,000/yr ?

Earn \$1,000 your first month in 2 steps working part-time from home!

1. Introduce Shaklee to 15 families who *re-direct* about \$75 of monthly purchases they’re *already* making (nutritional supplements, deodorant, household cleaners...) to Shaklee.
2. Mentor 5 people who want to build a business by helping their families and the planet become healthier. Business builders are so passionate about Shaklee products, they redirect all their personal care, nutrition, household cleaners & laundry, weight management, sports nutrition purchases, skin care, and makeup purchases to Shaklee.

For income exceeding \$1,000/mo, simply assist your business builders in achieving these same goals. Get on Shaklee’s FastTRACK to earn \$100,000 in your first 15 months. To meet FastTRACK goals, the recommended action plan is introducing 3 GOLD Ambassador business builders and 10 regular customers every 90 days.

