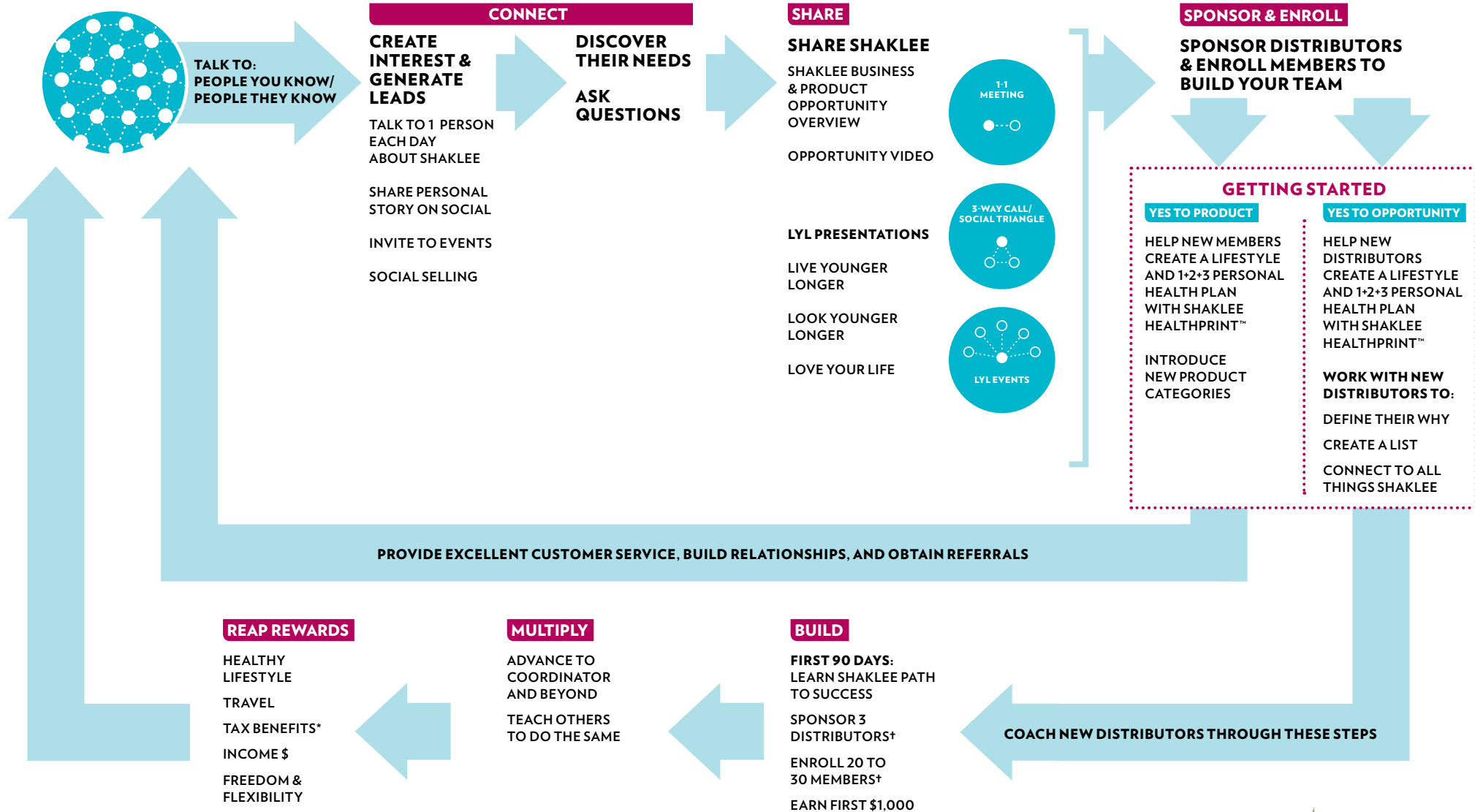


# Shaklee Path to Success

INTERACTIVE PATH AVAILABLE ONLINE:  
EVENTS.SHAKLEE.COM/PATH-TO-SUCCESS

## START WITH A BIG WHY



The average annual income in 2017 for the Business Leader ranks was: Director \$10,658; Senior Director \$14,407; Coordinator \$22,217; Senior Coordinator \$33,716; Executive Coordinator \$48,888; Senior Executive Coordinator \$63,999; Key Coordinator \$96,411; Senior Key Coordinator \$121,455; Master Coordinator \$207,773; Senior Master Coordinator \$264,275; Presidential Master Coordinator \$579,520. Average annual income for each rank is calculated monthly based on information reported on: Form 1099-MISC for all US Business Leaders who achieved the rank that month. The sum of these monthly averages is the figure reported. Results will vary with effort. Shaklee Corporation does not guarantee that any particular income level will be achieved. \*Potential tax benefits. Consult your tax adviser. †Sponsor New Distributors and enroll New Members with purchase.



©2018 Shaklee Corporation.  
Distributed by Shaklee Corporation, Pleasanton, CA 94588  
18-513 (New 7/18)